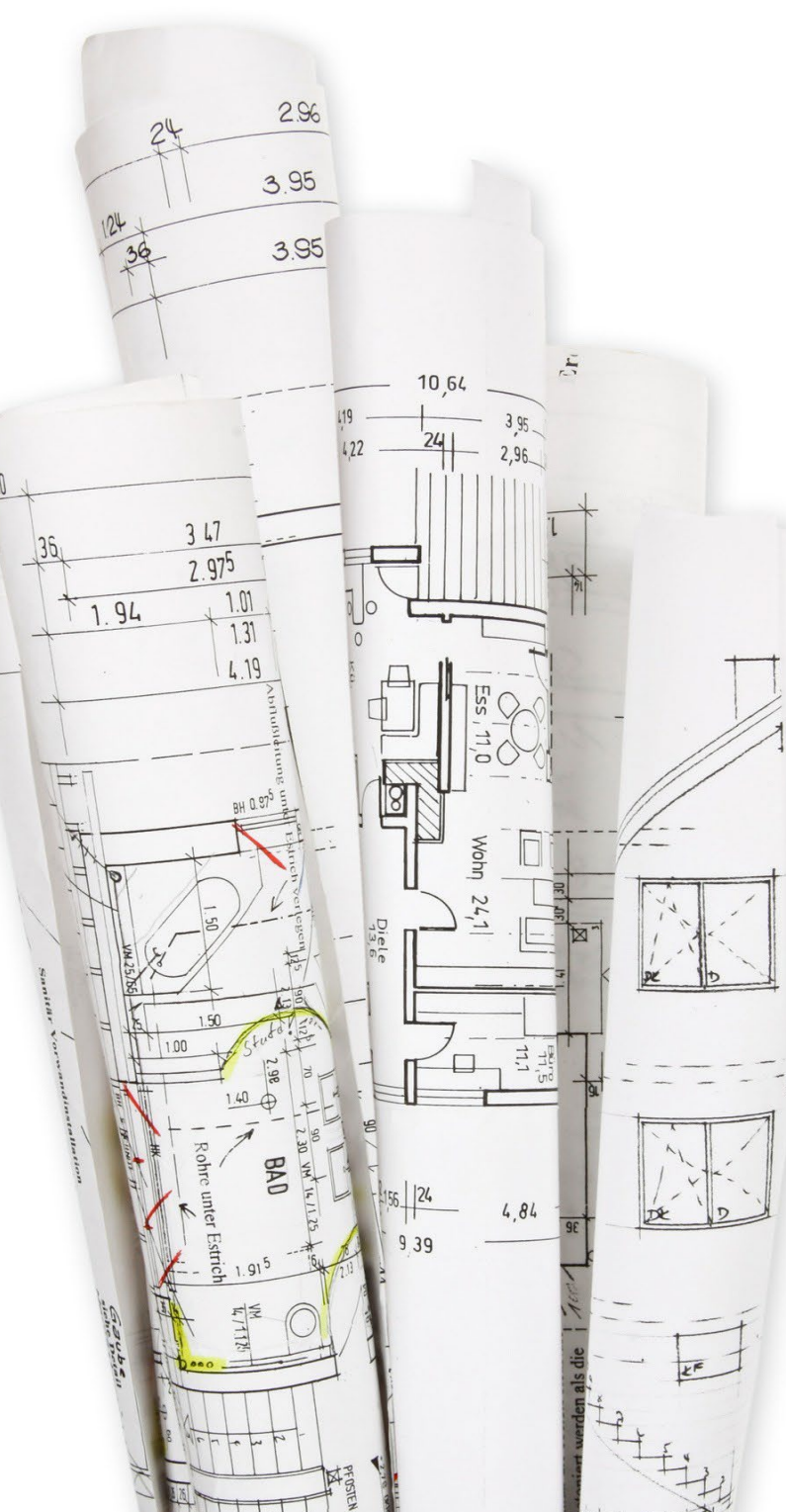


# BUILDING BLOCKS

**DESIGNPRO**  
**INSURANCE GROUP**  
*A Wichert Insurance Agency*



## Benefits of Participating in Professional Associations

By: *Eric O. Pempus, FAIA, Esq., NCARB*  
*DesignPro Insurance Group*

Participating in professional associations can help architects and engineers (A/Es) enrich their careers and simultaneously contribute to the advancement of their professions.

### IT'S A PERSONAL CHOICE

The decision about which organizations to join and participate in is a personal choice. Each A/E must determine which association(s) will provide the benefits most likely to advance their professional life and career. One thing is certain, members of professional societies receive much more from their membership when they become involved in the activities of their organization, eclipsing the cost and time of joining.

### IN THIS ISSUE:

FEATURED ARTICLE  
CONTINUING EDUCATION  
SOCIAL MEDIA  
MEET OUR PEOPLE

And professional associations may be established locally, state-wide, regionally, nationally or even internationally. In addition, some of them have a code of ethics or conduct as part of their membership requirements. Violations of a code of ethics vary from one association to another. For instance, the American Institute of Architects' rules of conduct are mandatory, which can sanction its members. For the design professions, for example:



## 2020 Code of Ethics and Professional Conduct

FROM THE OFFICE OF GENERAL COUNSEL



## Code of Ethics for Engineers



## DBIA Code of Professional Conduct



## Construction Specification Institute Code of Ethics & Professional Conduct



It appears there is an association for everything. The ConsensusDocs' Coalition was founded in 2007 by approximately 20 organizations in the design and construction industry. The standard form of agreements

in the “Consensus Docs” Coalition (an alliance for combined action) lists organizations related to the design professions and construction industry, as follows:

## Organizations In & Not In ConsensusDocs’ Coalition

### IN

- ▶ Association of the Wall & Ceiling Industry
- ▶ Painting & Decorating Contractors of America
- ▶ Finishing Contractors Association
- ▶ Independent Electrical Contractors
- ▶ National Association of Construction Auditors
- ▶ National Association of Electrical Distributors
- ▶ National Association of State Facilities Administrators
- ▶ National Association of Surety Bond Producers
- ▶ National Ground Water Associations
- ▶ National Tile Contractors Association
- ▶ Retail Contractors Association

### NOT IN

- ▶ AIA, NCARB, NAAB and EJCDC
- ▶ American Council of Engineers Committee
- ▶ American Society of Civil engineers
- ▶ American Concrete Institute
- ▶ American Institute of Steel Contractors
- ▶ American Society of Heating & Refrigeration Engineers
- ▶ Building Commissioning Association
- ▶ National Society of Professional Engineers
- ▶ National Fire Protection Association
- ▶ National Electrical Code
- ▶ American Bar Association Forum on Construction Law
- ▶ American Arbitration Association
- ▶ USGBC and Leadership in Energy & Environmental Design

## AN EXAMPLE OF AN AIA CHAPTER’S BENEFITS OF PARTICIPATING IN A PROFESSIONAL ASSOCIATION

Being an AIA member has always meant more than just joining an organization. It means being part of a vibrant, supportive, influential community that shares your passion for design, a desire to change the world, and a commitment to following the highest standards of practice.



### **It's Renewal Season**

It is that time of year to renew your membership and stay connected to the world's largest, most influential network of architecture professionals.

### **Professional development and Continuing Education**

AIA provides the knowledge you need to shape the world we design through resources and CE opportunities to advance your skills and meet requirements.

### **Advocacy and leadership**

Stay connected to a powerful collective voice, driving positive change on the issues that matter to architects and the built environment.

### **Community and networking**

Collaborate with the world's largest, most influential network of architectural professionals through the AIA Community Hub, events, webinars, and more to shape a better tomorrow, together.

### **A competitive edge**

Access insights, resources, and exclusive tools—like the newly released 2024 AIA Firm Survey—to stay competitive and ready for new opportunities.

### **Recognition and credibility**

AIA membership is a mark of distinction, recognized nationally and internationally as a commitment to excellence and ethical standards in the AEC industry.

For comparison purposes, according to artificial intelligence (A.I.):

## ARCHITECTS

As of recent data, there are approximately **121,368 licensed architects** in the United States. This number has been steadily growing over the years as the demand for architectural services increases. The exact number can vary slightly depending on the source and the time of the data collection, but this figure gives a good estimate of the licensed architect workforce in the U.S.

There are approximately **95,000 members** of the **American Institute of Architects (AIA)** in the United States. This includes both licensed architects and other professionals in the architecture field. However, not all licensed architects are members of the AIA. The membership represents a significant portion of the licensed architect population, but not the entirety.

*80% are AIA members*

## PROFESSIONAL ENGINEERS

As of recent estimates, there are approximately **1.7 million licensed professional engineers (PEs)** in the United States. This includes engineers from a variety of fields such as civil, mechanical, electrical, and chemical engineering. The number of licensed engineers has been growing steadily due to the increasing demand for engineering services across industries.

There are approximately **300,000 to 400,000 licensed professional engineers (PEs)** in the United States who are members of various professional associations. One of the largest and most prominent organizations for engineers is the **National Society of Professional Engineers (NSPE)**, which has around 30,000 to 40,000 members. Additionally, many engineers belong to other specialized organizations, such as the American Society of Civil Engineers (ASCE), the Institute of Electrical and Electronics Engineers (IEEE), and the American Society of Mechanical Engineers (ASME), among others.

Membership numbers vary by organization, but not all licensed professional engineers are members of such associations, as membership is typically voluntary.

*20% are members of a professional association based upon 350,000 Pes*

## LAWYERS

As of recent estimates, there are approximately **1.3 million licensed attorneys** in the United States. This number includes practicing lawyers as well as those who may have retired or are no longer active in law practice. The number of attorneys has steadily increased over the years due to growing demand for legal services and the expanding legal profession.

As of recent data, there are approximately **400,000 members** of the **American Bar Association (ABA)**. This includes licensed attorneys who choose to be members of the ABA, but not all licensed attorneys in the United States are members of this professional organization. The ABA is one of the largest voluntary associations for lawyers in the U.S., but membership is not mandatory for practicing law in the country.

*30% are ABA members*

---

### **About the Author of this Risk Management Building Block Article**

*As a risk manager for the last 19 years for the design profession, Eric has experience in professional liability insurance and claims, architecture, engineering, land use, law, and a unique background in the construction industry. Prior to risk management, he has 25 years of experience in the practice of architecture/engineering, and as an adjunct professor teaching professional practice courses at the*

*undergraduate and graduate levels for the last 37 years at Kent State University's College of Architecture & Environmental Design.*

*As a Fellow of the American Institute of Architects and AIA National Ethics Council 2021 Chair, he has demonstrated his impact on architectural profession. He has presented numerous loss prevention and continuing educational programs to design professionals since 2000 on topics of ethics, contracts, and professional practice in various venues across the United States and Canada. He has been the former member and chair of his city's Board of Zoning & Building Appeals for 24 years, and is a licensed architect, attorney, and property & casualty insurance professional.*

*His educational background includes a JD from Southwestern University School of Law, Los Angeles; Master of Science in Architecture from University of Cincinnati; and BA in psychology/architecture from Miami University, Oxford, Ohio.*

The above comments are based upon DesignPro Insurance Group's experience with Risk Management Loss Prevention activities and should not be construed to represent a determination of legal issues but are offered for general guidance with respect to your own risk management and loss prevention. The above comments do not replace your need for you to rely on your counsel for advice and a legal review, since every project and circumstance differs from every other set of facts.

Disclaimer: The viewpoints expressed in this article are those of the author(s) and are not necessarily approved by, reflective of or edited by other individuals, groups, or institutions and this article is an expression by the author to generate discussion and interest in this topic.

MARK YOUR  
CALENDARS  
FOR ERIC'S  
UPCOMING



CONTINUING EDUCATION PROGRAMS:

Speaking Engagements:



CLEVELAND  
ENGINEERING  
SOCIETY

Learn • Connect • Lead

**Cast No Shadow on my Solar Collector – Past, Present & Future  
Approaches to Solar Access Rights**

**Cleveland Engineering Society's 73<sup>rd</sup> Annual Engineering in  
Construction & Manufacturing Conference and Trade Show**

**Conference Theme:** 'Out of the Box' – Innovation, Technology, Sustainability, etc.

**When:** Thursday, February 27, 2025; 7:30 AM – 5:00 PM

**Location:** Corporate College East (4400 Richmond Rd, Warrensville Hts. Ohio, 44128)



[www.halfmoonseminars.org](http://www.halfmoonseminars.org)

**HalfMoon Education**

**Managing Risk in the Practice of Engineering**

**When:** April 22, 2025, 2025, 8:30 – 9:30 am CT – Live Webinar

# GET TO KNOW US ON SOCIAL MEDIA



Get the latest updates from DesignPro by following us on social media!

Visit the DesignPro Website at: [www.designproins.com](http://www.designproins.com)

Visit the Wichert Website at: [www.wichert.com](http://www.wichert.com)

Follow DesignPro on Twitter at: [@DesignPro\\_Insurance](https://twitter.com/DesignPro_Insurance)

Follow Eric Pempus on LinkedIn at: [eric-o-pempus-esq-faia](https://www.linkedin.com/in/eric-o-pempus-esq-faia)

Follow Brad Bush on LinkedIn at: [brad-bush-a2a0136](https://www.linkedin.com/in/brad-bush-a2a0136)

Follow Wichert Insurance on Facebook at: [facebook.com/wichertins](https://facebook.com/wichertins)

Follow Wichert Insurance on Twitter at: [@Wichert\\_Insurance](https://twitter.com/Wichert_Insurance)

# MEET OUR PEOPLE:



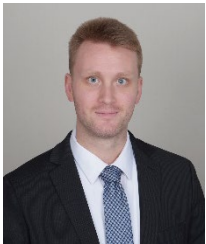
Brad Bush, CPCU, AU  
Principal  
brad.designproins@wichert.com



Eric Pempus  
FAIA, Esq., NCARB  
Risk Manager  
eric.designproins@wichert.com



Connor Bush  
Account Executive  
connor.bush@wichert.com



Mike Pettit  
Risk Manager  
mike.designproins@wichert.com



Roger Perry  
Account Executive  
roger.designproins@wichert.com



Tracey Heise  
Account Manager  
tracey.designproins@wichert.com



Tracy Combs  
Risk Manager & Loss Control Specialist  
tracy@wichert.com

## DesignPro Insurance

5991 Chandler Court, Suite A  
Westerville, OH 43082  
614-794-4820

[www.designproins.com](http://www.designproins.com)

2301 Blake Street, Suite 100  
Denver, CO 80205  
614-426-3045